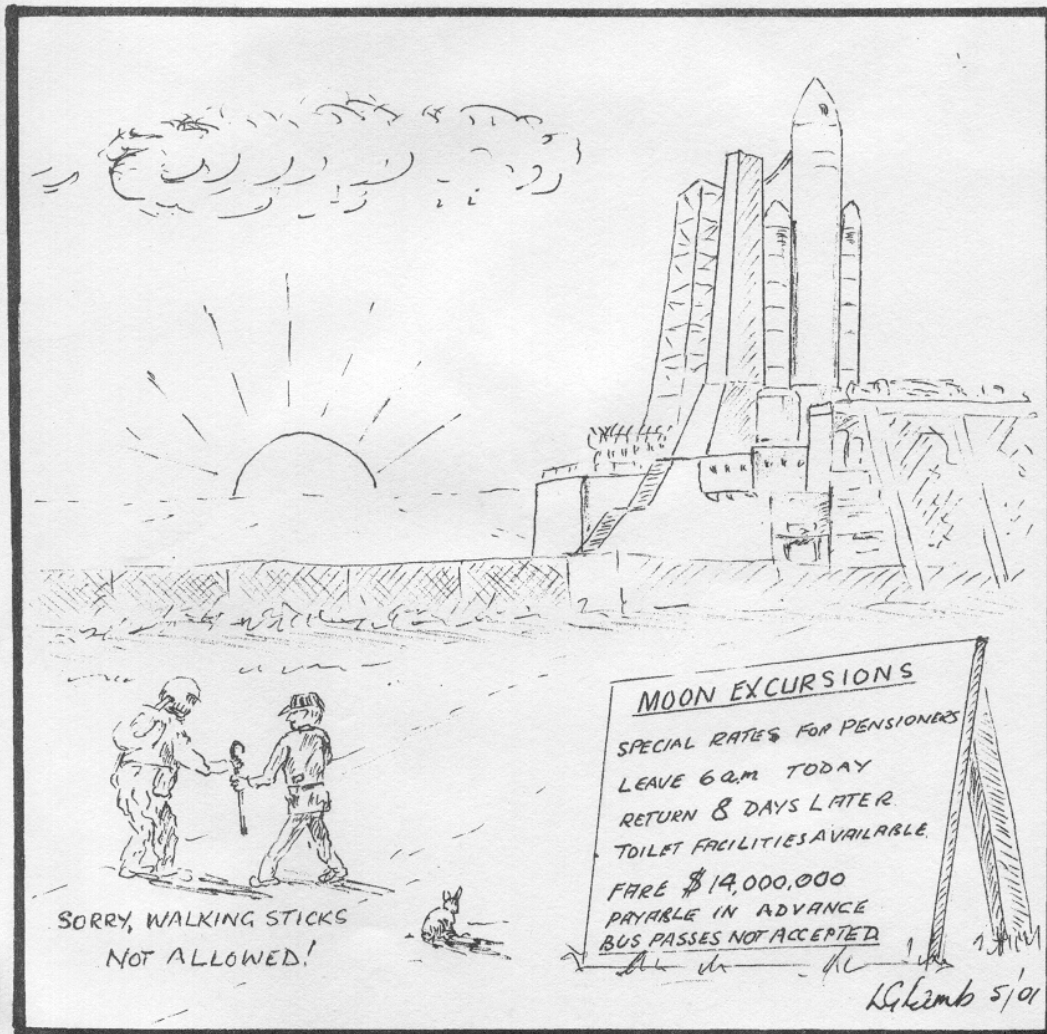


# ORWELL ASTRONOMICAL

## SOCIETY IPSWICH

Charity No 271313

### JUNE 2001



## Society News

### 1 Next Committee Meeting

The next committee meeting will be held on Saturday 23<sup>rd</sup> June from 19:30 in the clubroom. This is an open meeting and any one who is interested is invited to attend.

### 2 Events for 2001

Event	Details	Date
BAA Exhibition Meeting	London Guildhall University	July Date not yet fixed
Summer Barbecue		Date to be fixed.
Summer Excursion	Space Centre Leicester	15 <sup>th</sup> September
Open Weekend	Members help will be needed again this year to prepare the displays	24 <sup>th</sup> and 25 <sup>th</sup> November
Equinox Star Party	Thetford Organiser; Loughton A.S	14 <sup>th</sup> to 23 <sup>rd</sup> September
Visit to Cambridge AS and Braintree AS	These were proposed at the AGM	Nothing arranged yet
North Essex Astronomical Society	They have recently opened a new observatory. A visit will be arranged	Nothing arranged yet
Christmas Meal		Provisional dates 12 <sup>th</sup> or 19 <sup>th</sup> December

Additional events will be added through out the year

## Summer Excursion

Date Saturday 15<sup>th</sup> September



( This date has been brought forward one week since I sent out the email )

The venue is at the National Space Centre Leicester.

Entrance cost will be £5.5 per person, ( This price relates to a minimum group size of 20 )

The coach hire will have to be added to the entrance fee. The more members, who attend, will reduce the unit cost per person.

If you are interested please contact Roy Gooding, or add your name to list on the observatory notice board

# Night Sky

All times GMT

## Sun

The sun will be rising approximately 03:40  
 The sun will be setting approximately 20:20

## Moon

Full Moon	3 <sup>rd</sup> Quarter	New Moon	1 <sup>st</sup> Quarter
6 <sup>th</sup>	14 <sup>th</sup>	21 <sup>st</sup>	28 <sup>th</sup>

**Mercury** Mercury will be at inferior conjunction on the 16<sup>th</sup>, and will not be observable this month.

**Venus** Venus reaches greatest western elongation on the 8<sup>th</sup> (46°). At the end of the month Venus will be rising about 2 hours before sunrise. Magnitude -4.3

**Mars** Mars will be at opposition on the 13<sup>th</sup>, magnitude -2.4. Mars is in Sagittarius and Ophiuchus at this opposition, giving it a low altitude. This will hamper easy observations from our latitude.

**Jupiter** Jupiter will be in conjunction with the sun on the 14<sup>th</sup>. It will not be observable this month

**Saturn** This month Saturn has moved back into the early morning sky. By the end of the month it will be rising about 2 hours before sunrise. Magnitude 0.3

**Uranus** Uranus will be rising at about 22:30 by the end of the month. Magnitude 5.7

**Neptune** Neptune will be rising at about 21:50 by the end of the month. Magnitude 7.8

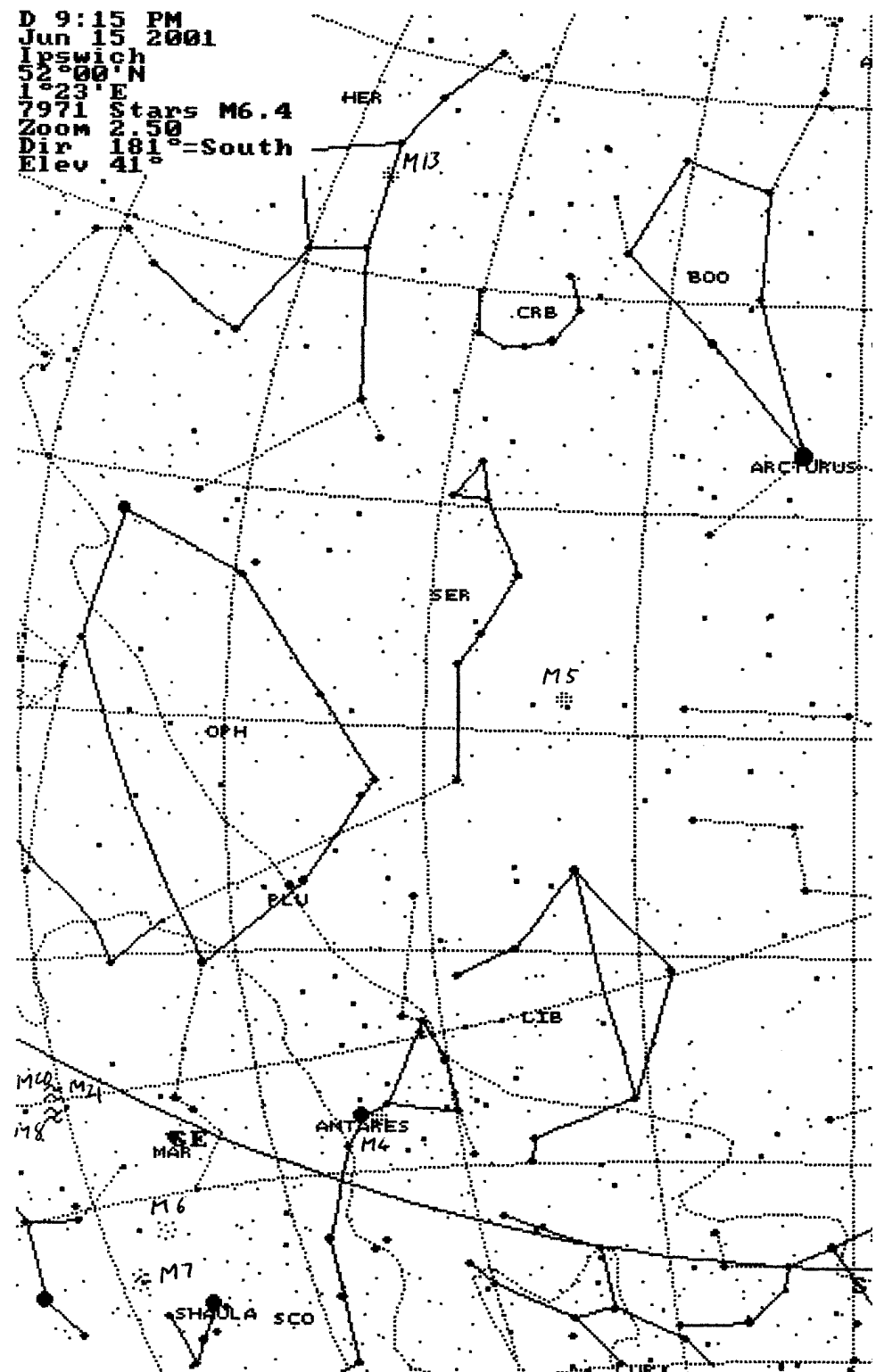
## OCCULTATIONS DURING JUNE

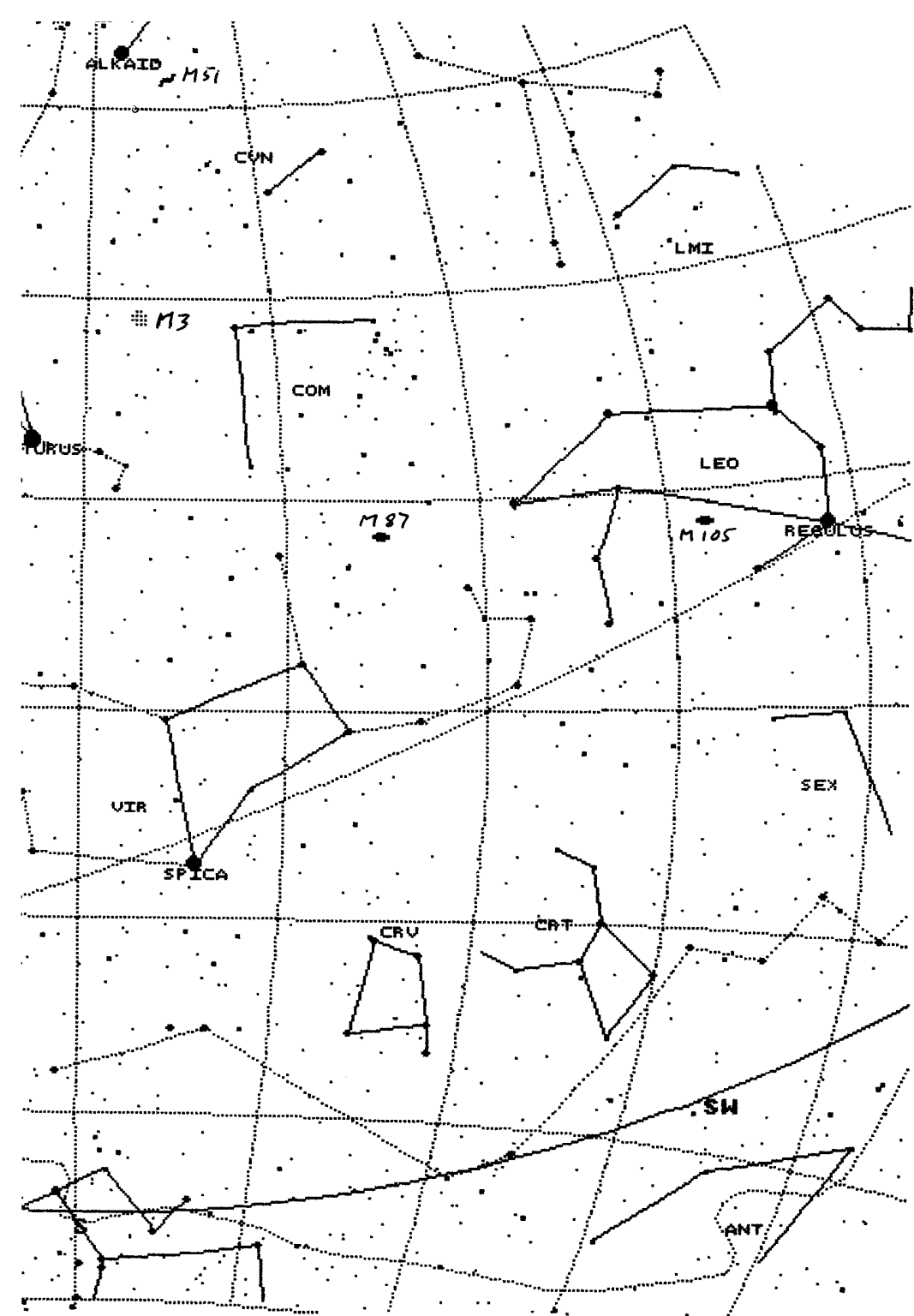
The table lists stellar occultations which occur during the month under favourable circumstances. The data relates to Orwell Park Observatory, but will be similar at nearby locations.

D or R	Date & Time (UT)	Lunar Phase	Sun Alt (°)	Star Alt (°)	Min Dist (rad)	Star	Mag
D	01 Jun 22:54	0.82+	-15	27	0.25N	ZC 1923	6.8
D	29 Jun 21:32	0.69+	-8	24	0.35S	ZC 2008	6.6

James Appleton

D 9:15 PM  
 Jun 15 2001  
 Ipswich  
 52°00'N  
 1°23'E  
 7971 Stars M6.4  
 Zoom 22.50  
 Dir 181°=South  
 Elev 41°





### Past it!

No: 'Passed it' - the telescope test that is! Having dithered a bit, not made time, and once not got to the observatory due to car troubles, on Wed April 25th, Dave and Martin gave me half an hour (or was it an hour) of their time to put me through the recently established Telescope Test. Apart from a couple of points about safety on group visits, the correct eyepiece to use when projecting the sun, and the non function of the plug-in motor control, they let me through.

I felt very pleased, and to me it had a symbolic significance about being a member - not to mention that I am now available to take on the task of host to visiting groups, as Garry was quick to recognise!

All I wish to do in this brief article, is to recommend to the many members well able, but still on the brink of taking the test, to push to do so. I say 'push', because in our Society it is necessary to be a bit pro-active if you want to get something done - and why not! In this case it helps to tell Martin or Dave you wish to take the test, and have a few familiarising sessions with anyone who has already made it onto the list on any of the cloudy Wednesdays that we frequently have. Garry in particular has said he is willing to do this as was stated in an article recently. ( We probably really need an extra night in the week to give more opportunity to use the telescope, but that is another point.)

I can understand some members being resistant to the idea of being tested, especially if you have been around the Society a long time. But it is an historic, and to some extent delicate instrument, and the test gives a recognised way of becoming an efficient and safe operator. And you could include it on your CV for your next job application; 'Approved Operator of Historic Telescope.'

Ted Sampson.

### Solar Observing Evening

There will be a solar observing session on Monday 28th May at the Observatory starting at 7 p.m. If the weather is not clement we could chat astronomy instead. All welcome.

**2001 COMMITTEE**

CHAIRMAN  
 SECRETARY &  
 WORK PARTY ORGANISER  
 TREASURER & PUBLICITY  
 MECHANICS  
 NEWSLETTER CO-ORDINATOR  
 BEGINNERS MEETING CO-ORD  
 & VISIT CO-ORD  
 EQUIPMENT CURATOR  
 LIBRARIAN  
 CO-OPTED MEMBER  
 LECTURE CO-ORDINATOR  
 & DARK SKIES  
 JOURNAL ARTICLES TO  
 CORRESPONDENCE ADDRESS  
 MEMBERSHIP

D Payne  
 R Gooding  
 M Cook  
 E Sims  
 T Sampson  
 G Coleman  
 J Walsh  
 J Appleton  
 P Richards

E Sims Ipswich Suffolk IP1 4HA  
 R Gooding OASI Secretary  
 Ipswich Suffolk IP1 6AE  
 M. Cook Ipswich IP4 5PZ

Home Phone Work Phone



**Observing Programme For May**

Dates	Observing Director	Activities
Monday		Nothing Booked
Tuesday		Nothing Booked
Wednesdays 2nd 9th 16h 23rd 30th from 8.00pm	M Cook D Payne	Nebular & Faint Objects
Thursday	Nothing Booked	Group Visit
Fridays		Nothing Booked

All members are welcome on any night, but on nights other than Wednesday please check with the appropriate director that the observatory will be open.

**Special Events**

- 1. COMMITTEE MEETING June 23rd**  
 The next committee meeting is to be held on Saturday 23rd of June at 7.30pm in the club room at the observatory. All members are welcome to attend.
- 2. LECTURE MEETING**  
 Nothing organised for this month
- 3. ASTRONOMY WORKSHOP**  
 Nothing organised for this month

**Society Contact Details**

		<u>Home Phone</u>	<u>Work Phone</u>
Chairman	D Payne		
Secretary	R Gooding		

Contact details for the full committee are inside the back page.

e-mail queries: [ipswich@ast.cam.ac.uk](mailto:ipswich@ast.cam.ac.uk)  
 WWW address: <http://www.ast.cam.ac.uk/~ipswich/>