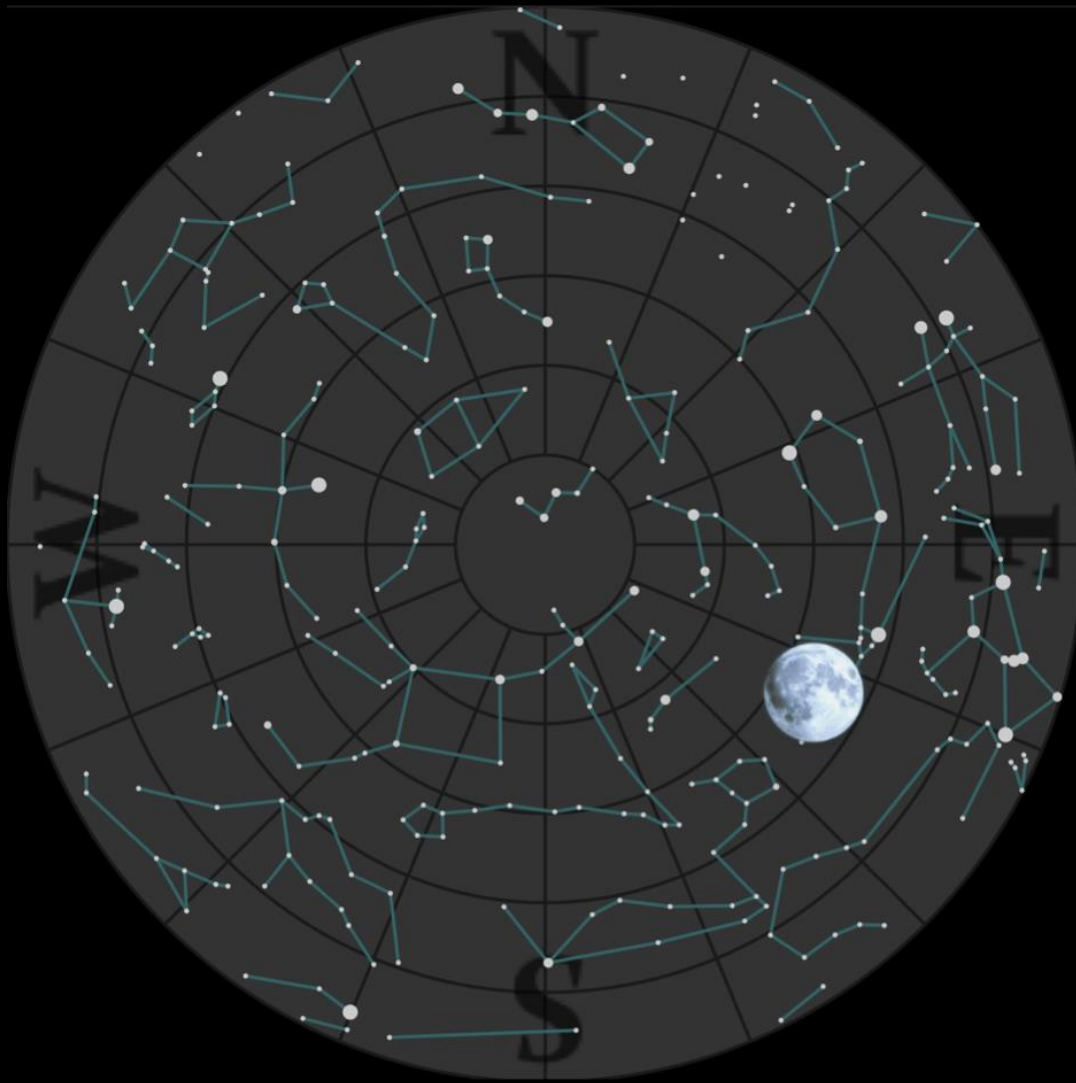


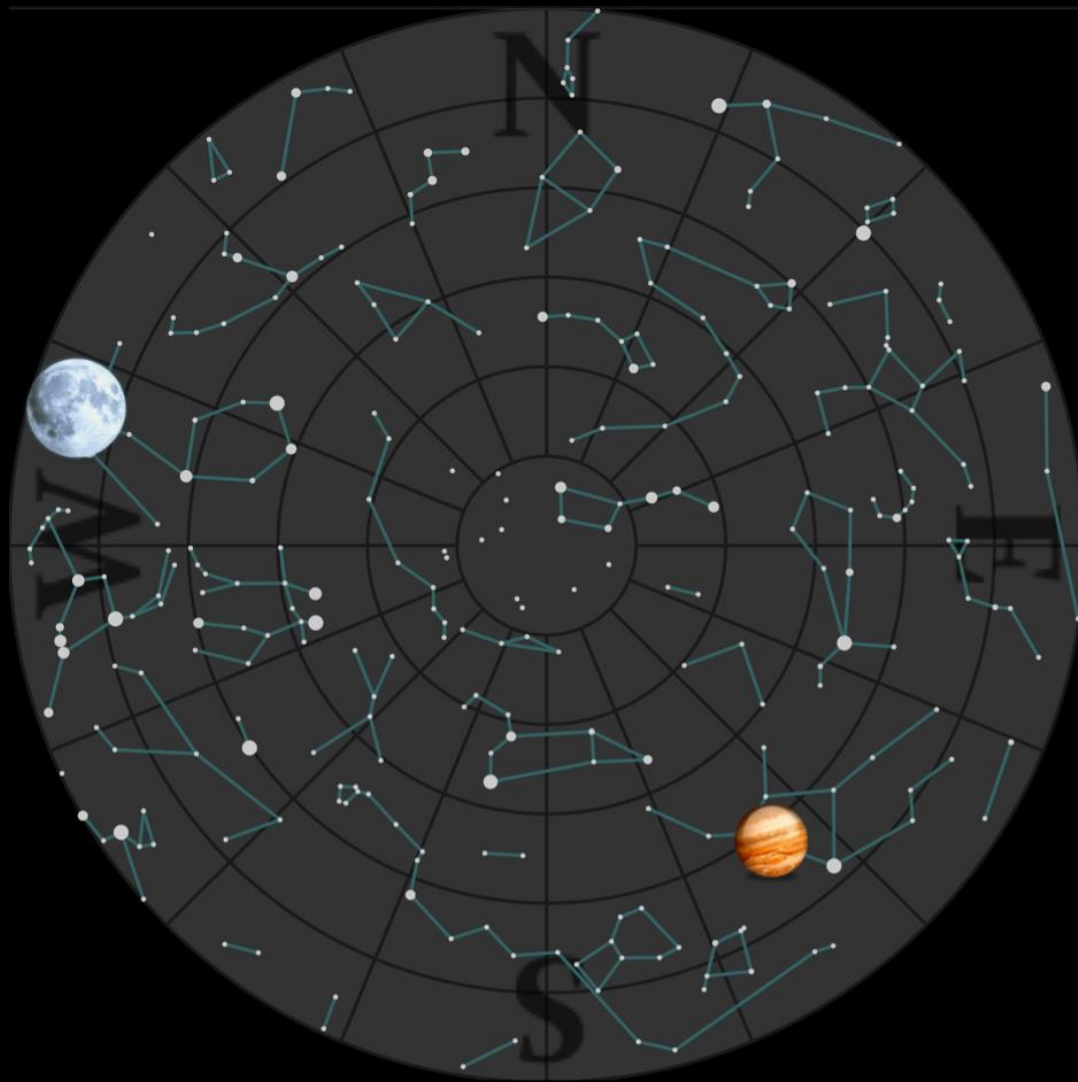
What's Up?

2016 November 14 to December 19

Bill Barton, FRAS

- The Sky 22:00
Tonight





- The Sky 08:00
Tomorrow Morning

Inner Solar System

- Sun
 - Heading South, solstice on December 21
- Mercury
 - In the evening sky this period
 - Greatest eastern elongation on December 11 (21°)
- Venus
 - In evening sky, phase now falling off

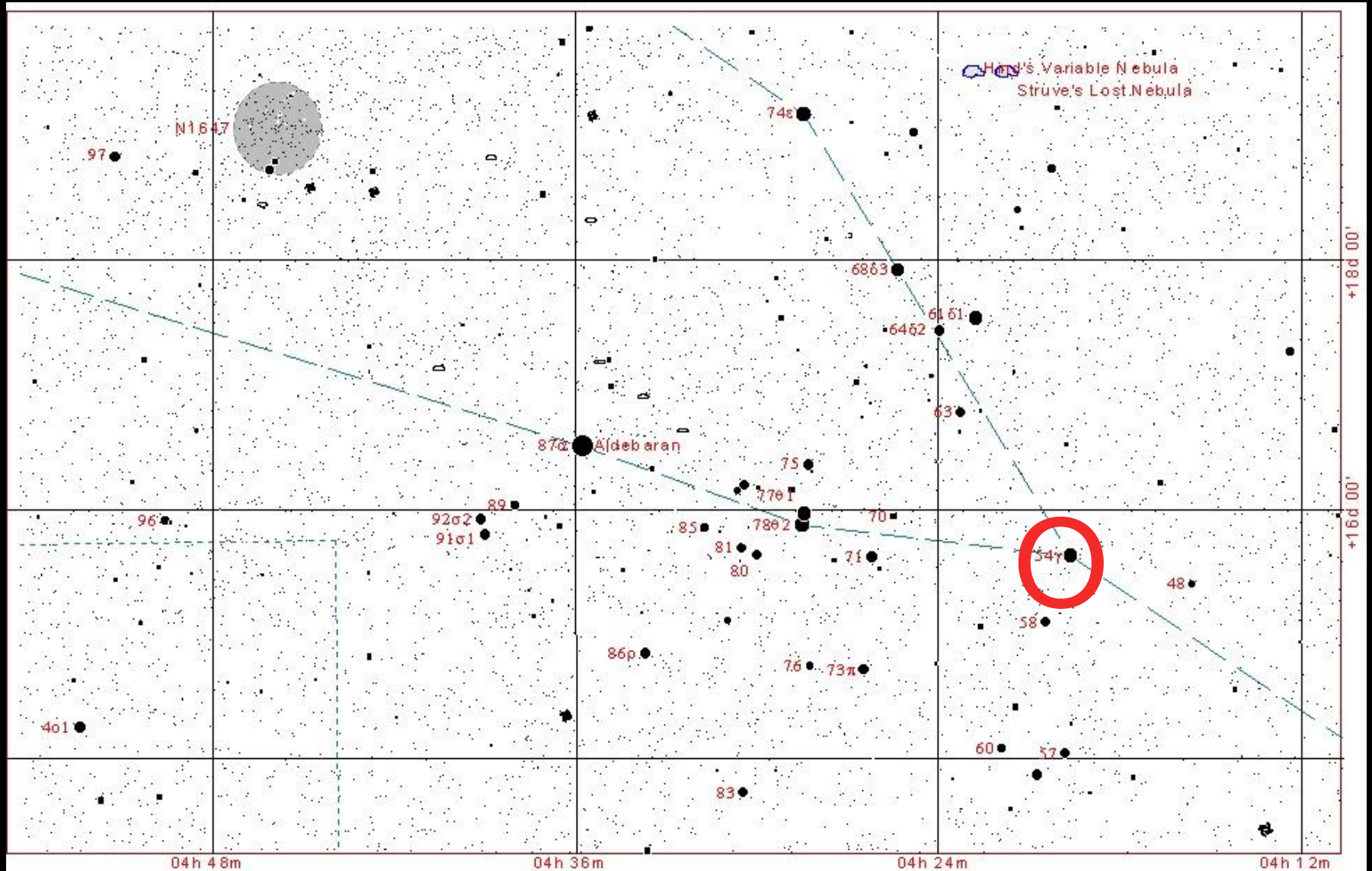
Earth

- Moon
 - Full, November 14 (Frost Moon)
 - Last Quarter, November 21
 - New, November 29
 - First Quarter, December 07
 - Lunar Occultations, 15 this period, mags 3 to 5
- Eclipses
 - None this period
- Meteors
 - Leonids, November 15-20, ZHR 20?
 - Geminids, December 08-17, ZHR 100+

Lunar Occultations

- Moon still passing through the Hyades star cluster each month
- Evening of Monday December 12th
- Moon phase, two days before 'full' rising around 15:15UT
- γ Tauri (mag 3.7) dark limb disappearance at 21:40UT
- γ Tauri is at the apex of the 'V' of the Hyades

The Hyades Star Cluster



Outer Solar System

- Mars
 - In south-west at sunset, setting around 9pm, four hours after the Sun. In Sagittarius
- Jupiter
 - Visible in morning sky, rising one hour before the Sun. In Virgo
- Saturn
 - In west at sunset, setting two hours after Sun. In Ophiuchus

Society Events

- Outreach Event
 - Friday December 18, 7:00pm, Cedarwood School, Kesgrave

Other Events

- DASH
 - Observing Meeting, Saturday November 26, 7:30pm, Westleton Heath
- BAA Christmas Meeting
 - Saturday December 10, 2:00pm to 6:00pm, Burlington House, Piccadilly, London (advance booking ESSENTIAL and closes on November 30, if not before)