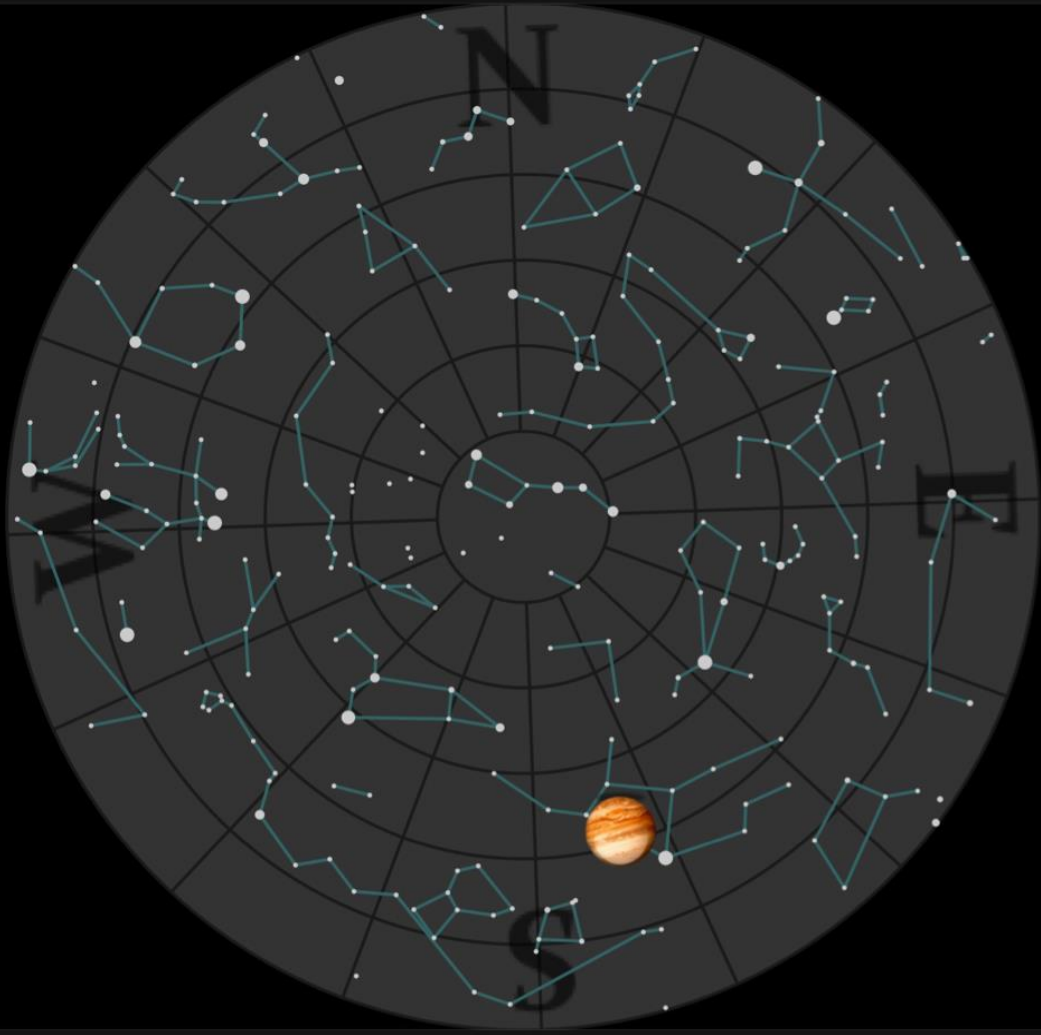


What's Up?

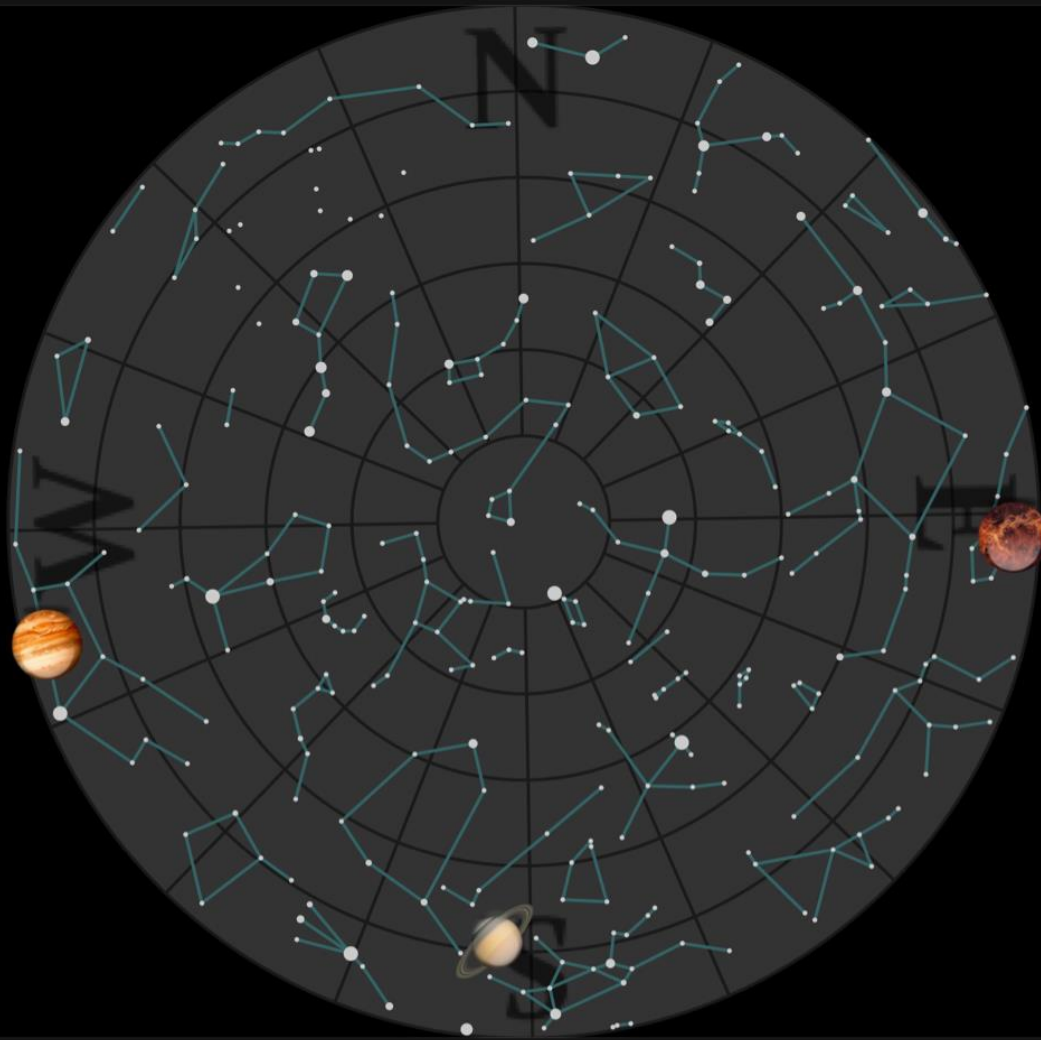
2017 April 24 to May 29

Bill Barton, FRAS

•The Sky 22:00
Tonight



•The Sky 04:00
Tomorrow Morning



Inner Solar System

- Sun
 - Declination increasing, rising earlier, setting later, in Aries then Taurus
- Mercury
 - In the evening sky at the beginning of this period, in Pisces then Aries
 - Inferior conjunction (our side of sun) on April 20
 - Then in morning sky
- Venus
 - In morning sky, phase and elongation increasing, in Pisces
 - Maximum elongation on June 03

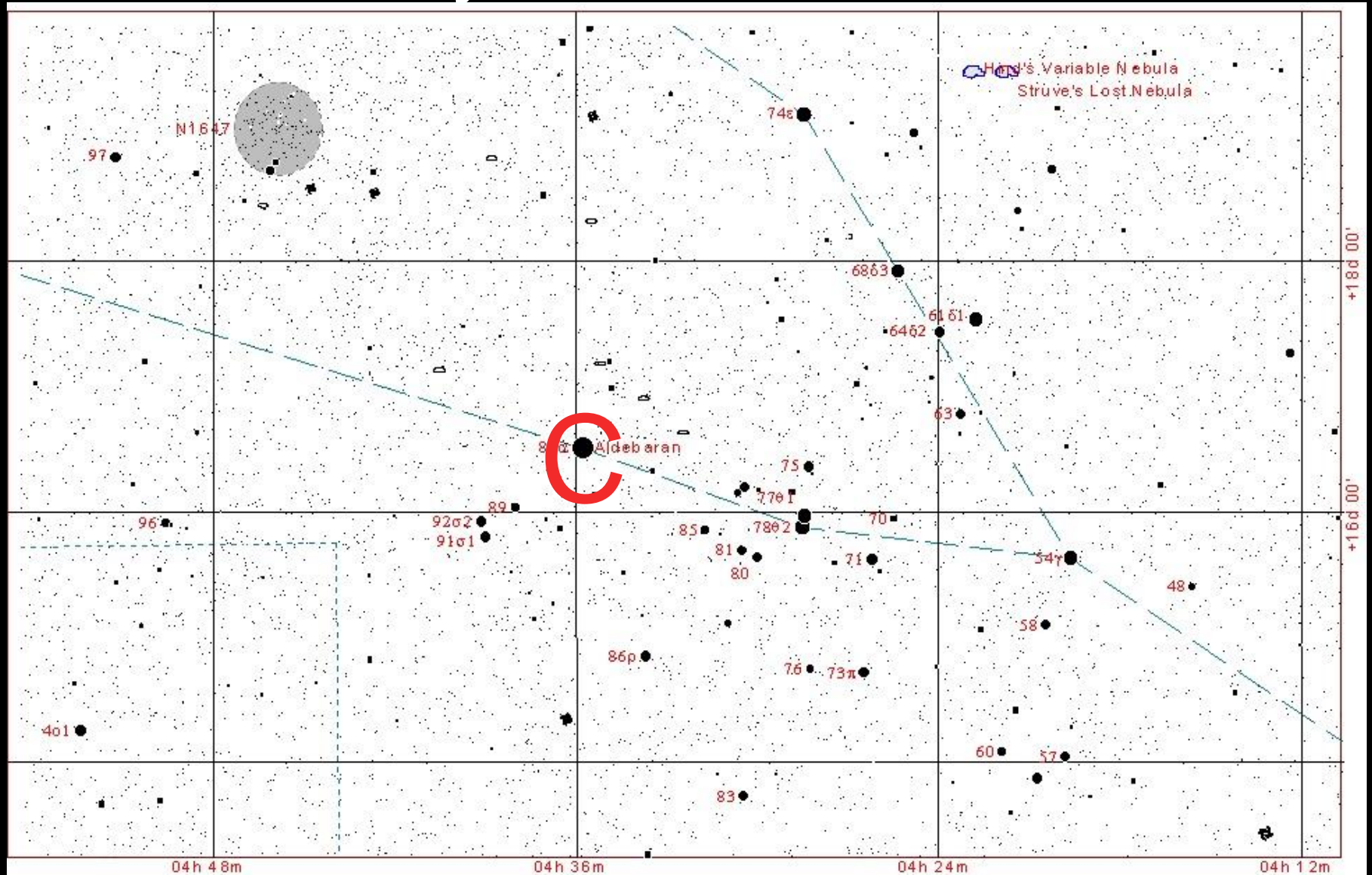
Earth

- Moon
 - New, 26, May 25
 - First Quarter, May 03
 - Full, 10 (Milk or Planting Corn Moon)
 - Last Quarter, 19
- Eclipses
 - None this period
- Meteors
 - η Aquarids, April 24-May 20, peak May 5-6, ZHR 40

Lunar Occultations

- Evening of Friday April 28th
- Sunset around 19:15UT
- Moon phase, two days past 'new'
 - rising around 06:19UT on the 28th
 - Setting around 21:50UT
- One star occulted this evening
 - α Tauri (Aldebaran, mag +0.9)
 - Dark limb disappearance at around 18:11UT
 - Bright limb reappearance at around 19:07UT

The Hyades Star Cluster



Outer Solar System

- Mars
 - In south-west at sunset, setting around 9pm, 2½ hours after Sunset, in Taurus
- Jupiter
 - In the sky all night, opposition was on April 07, in Virgo
- Saturn
 - Rising around mid-night, in Sagittarius then Ophiuchus
 - Opposition will be on June 15

Society Events

- April 30 - May 01
 - Outreach Event at Stonham Barns

Other Events I

- DASH
 - Lecture Meeting, Saturday May 13 7:30pm, Westleton Village Hall, Drs. Steve Hubbard & Malcolm Brown, 'Talk with ET? I think not!!!'
 - Observing Meeting, Saturday May 27, 7:30pm, Westleton Heath
- 'Sky at Night'
 - First broadcast 24 April 1957, 60 years ago.

Other Events II

- Felixstowe Railway
 - First train ran 1st May 1877, 140 years ago.